

# Special Stems for Gas-Actuated Thermometers

A1.1

A1.2

## Contact stems

### Application

For temperature measurement at the outsides of tanks and pipe barrels up to 300 °C.

### Standard Versions

For thermometers with rigid connection to stem or for thermometers with max. 5 m capillary line.

### Temperature Sensor (Stem)

1.4571 (316 stainless steel),  
max. medium temperature 300 °C  
installation surface plain or convex  
Model A1.1 installation surface plain  
Model A1.2 installation surface convex



A1.1



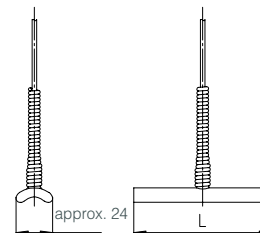
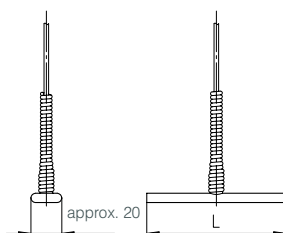
A1.2

### Options among others

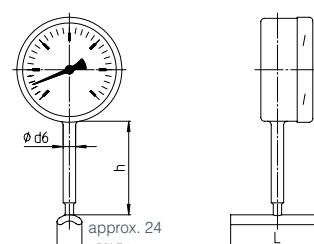
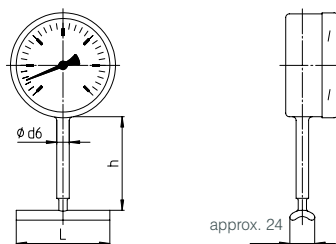
- Turnable connection between neck tube and stem
- Contact stem with special dimension

Stem Model:	A1.1	A1.2
Contact stem:	plain	convex
Rigid connection:	For an order of thermometers with rigid connection to stem the installation version (no. of drawing) has to be selected in addition to the stem model: The following description is being exemplified with the convex version A1.2	

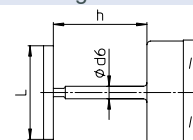
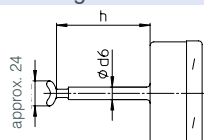
### Capillary line:



Bottom position:	drawing 1	drawing 2
------------------	-----------	-----------



Centre back position:	drawing 3	drawing 4
-----------------------	-----------	-----------



Dimensional Data (mm / inches)		
h	90	3.54"
d6	12	0.47"
Stem length L	90	3.54"

Technical changes, replacement of materials and errors excepted.



Sales and Export South, West, North  
**ARMATURENBau GmbH**  
Manometerstraße 5 • D-46487 Wesel - Ginderich  
Tel.: +49 (0)28 03/91 30-0 • Fax: +49 (0)28 03/10 35  
armaturenba.com • mail@armaturenba.com

Subsidiary Company, Sales and Export East  
**MANOTHERM Beierfeld GmbH**  
Am Gewerbepark 9 • D-08344 Grünhain-Beierfeld  
Tel.: +49 (0)37 74/58-0 • Fax: +49 (0)37 74/58-545  
manotherm.com • mail@manotherm.com

**8299.4**

02/11